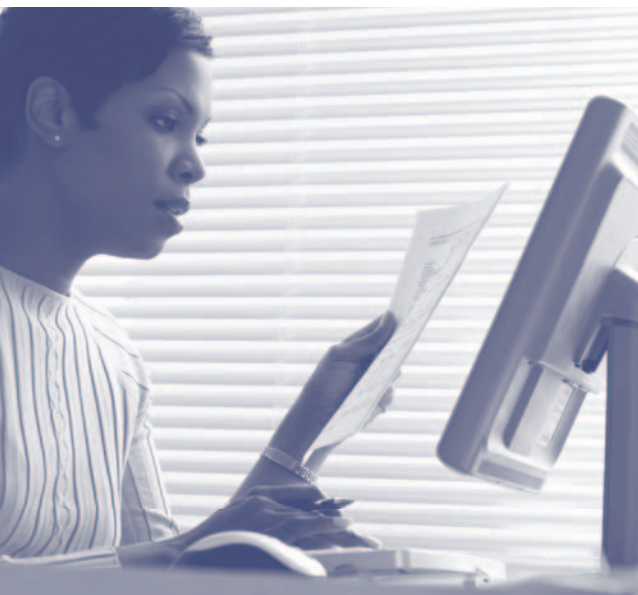
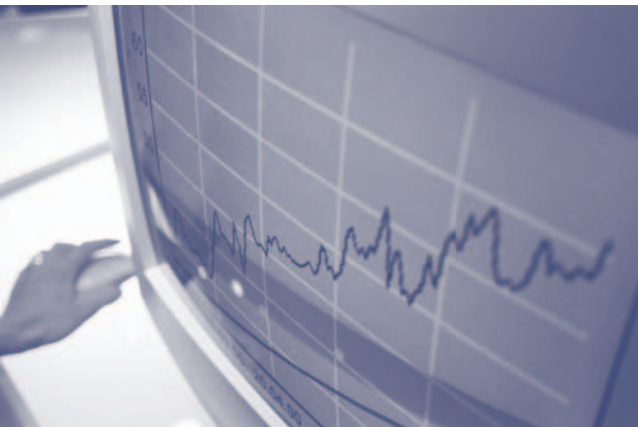


testTrax

standardized test analysis



testTrax is an internet web-based methodology that allows tracking, analysis, and reporting of standardized student test scores. It crosses multiple years, allowing the establishment of growth and performance trends for a single student, as well as for classroom, school, and district groupings of students. testTrax is based on a concept known as a "data warehouse", which is a computerized database of information that is already subdivided and summarized. This allows instantaneous access to information that might otherwise take many hours to compile by hand.

School systems in the past have lacked the tools to analyze test data. We offer a solution with our comprehensive data analysis software, testTrax. Using your test data in combination with your existing student data, testTrax produces a fully functional and customized data warehouse. Using testTrax your analyzed data will be available to you via our website.

Our team of programmers and educators has been able to develop a simple cost efficient data warehouse system which enables you to review individual ITBS, Stanford10, CTBS, PSAT, SAT, graduation exams, end of course tests, state criterion-referenced tests, or other test results and also to:

- Analyze test results by student
- Analyze test results by teacher
- Analyze Test results by school
- Analyze test results for the district
- Refresh student data each fall with new class assignments
- Analyze multi-year test data
- Monitor NCLB compliance
- Compile cohort data on students
- Compile cohort data on teachers
- Compile peer group comparisons
- Compile percentile distribution
- Correlate test data to demographics and other district-provided variables
- Conduct queries

Additionally, the flexible and user friendly interface will provide necessary demographic data and report printing features not readily available to you. Examples would be gender, race, absenteeism, economic status, Title I students, etc.

testTrax Is Your Answer To.....

- An easy-to-use analysis tool
- Efficient data storage for all test data
- Increasing the integrity of test data
- A cost efficient data repository
- Determining the effect of demographic variables on test scores
- Identifying student weaknesses and strengths
- Determining the connection between teacher training and test scores
- Identifying professional development needs
- NO CHILD LEFT BEHIND reporting of Adequate Yearly Progress

Selected Test Information				Selected District Information		
Name:	Criterion-Referenced Test (CRCT):			Index:	Fall 2004-05	
Publisher:	Copyright State of Georgia			District:	Coastal County Schools	
Test Year:	2004-05			Grade Level:	Fourth	
Administration:	04-01-2005 Spring					
Loc-Grade:	NA					

Sel	CRCT Content Area	Students	Avg Sco	Pct Lvl-1	Pct Lvl-2	Pct Lvl-3
<input type="radio"/>	Reading Total	2,416	348	3.9	40.7	50.5
<input type="radio"/>	Language Total	2,418	333	12.2	58.3	29.4
<input type="radio"/>	Math Total	2,417	320	21.6	62.6	15.8
<input type="radio"/>	Science Total	2,411	331	7.8	70.4	21.7
<input type="radio"/>	Social Studies Total	2,410	327	9.0	74.5	16.4

Further options are listed below. Click the button to the left of the option to continue.

Navigation: Prior page Summary Explorer

Data Column Descriptions	Color Key
CRCT Content Area = Main testing area for test	Pct Lvl-1
Students = Number of students tested	0 - 10
Avg Sco = Average Scaled Score	10.1 - 20
Pct Lvl-1 = Percentage Not Meeting Expectations	20.1 - 100
Pct Lvl-2 = Percentage Meeting Expectations	
Pct Lvl-3 = Percentage Exceeding Expectations	

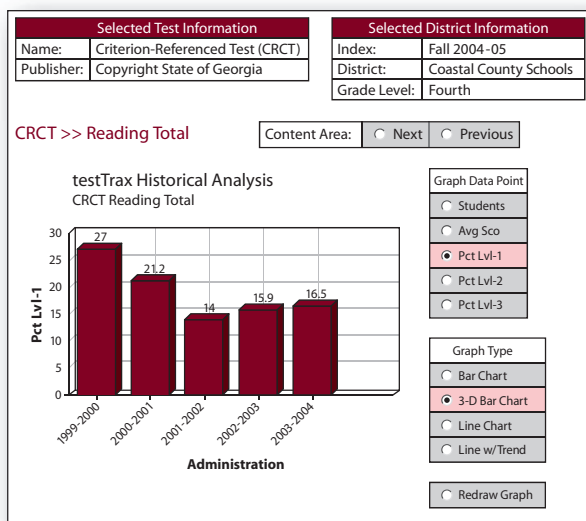
testTrax Data and Accountability Tools

Query and Report Writing Tool – produces a detail student listing based on a variety of variables that you define. The resulting list can be easily printed in Adobe PDF format or downloaded to your computer for additional analysis.

Comparative Data Analysis Tool – allows you to select various testing components and demographic variables and view information in a comparative manner among schools, classes, etc. This information can also be easily printed in Adobe PDF format or downloaded to your computer for additional analysis.

Accountability Analysis Tool – view test scoring information based on both the student alignment and the demographic data provided by your district. Since the NCLB/AYP requirements are geared towards specific demographic groupings, results are displayed in a similar manner. Listings of students who do not meet the district-defined objectives can be generated and/or printed for targeted remediation.

Migration Analysis Tool – similar to the comparative analysis tool, but allows analysis of data based on "Fall" student rosters versus the normal roster that was in effect at the time of the test. This allows administrators to get a good snapshot of in-coming students who have taken tests in the prior school year at different school(s).



testTrax Security

At eduTrax we have developed several strategies to insure that your testing data remains safe, secure, and confidential.

From a hardware perspective, nightly backups are made of all databases, and redundant web servers guarantee that your testing data is always safely on-line and at your disposal. Your database and internet transmission are encrypted using Secure Socket Layer encoding (SSL).

From a software standpoint, access to your data is rigidly controlled through a user login and password, which YOU control from your district. You have the freedom to restrict access to very specific areas for a user or relax the security and allow access to the entire database.

